

Retained by
Department of
Communities
182

74.80

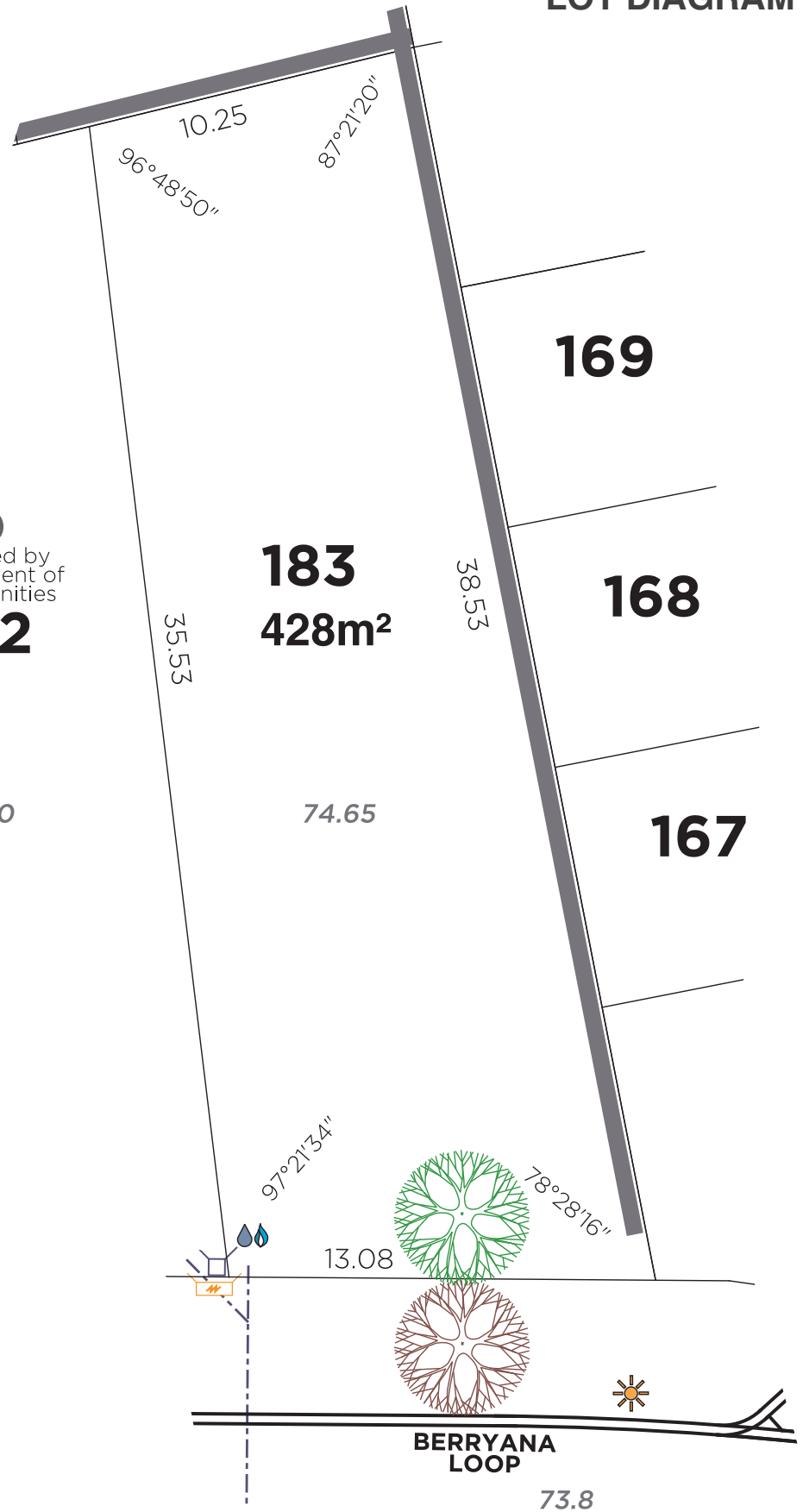
183
428m²

74.65

169

168

167



SCALE 1:200
AT A4 PAGESIZE

	SEWER LINE	ELECTRICITY	ROADS	EARTHWORKS	WATER	GAS	DRAINAGE	TREE	NBN	VEHICLE ACCESS RESTRICTED
	Connection Access Chamber	Pillar Street Light	Kerb Pram Ramp Footpath	Retaining Wall Ground Height 74.90 Steps	Connection or Deferred Water Gas	Pit Chamber	Street Tree Retained Tree	Pit Connection		

For more information on The Amble Estate contact us on (08) 9241 3911

NOTE: Lot area and dimensions subject to survey and Titles Office examination. The information shown has been prepared with care, however it is subject to change and whilst every reasonable care has been taken in preparing this information, the proprietor or its representatives and agent cannot be held responsible for any inaccuracies. Interested parties must be sure to undertake their own independent enquiries and investigation and hence satisfy themselves that any details provided herein are true and correct. Plan compiled from design drawings, hence does not represent "as constructed" information.